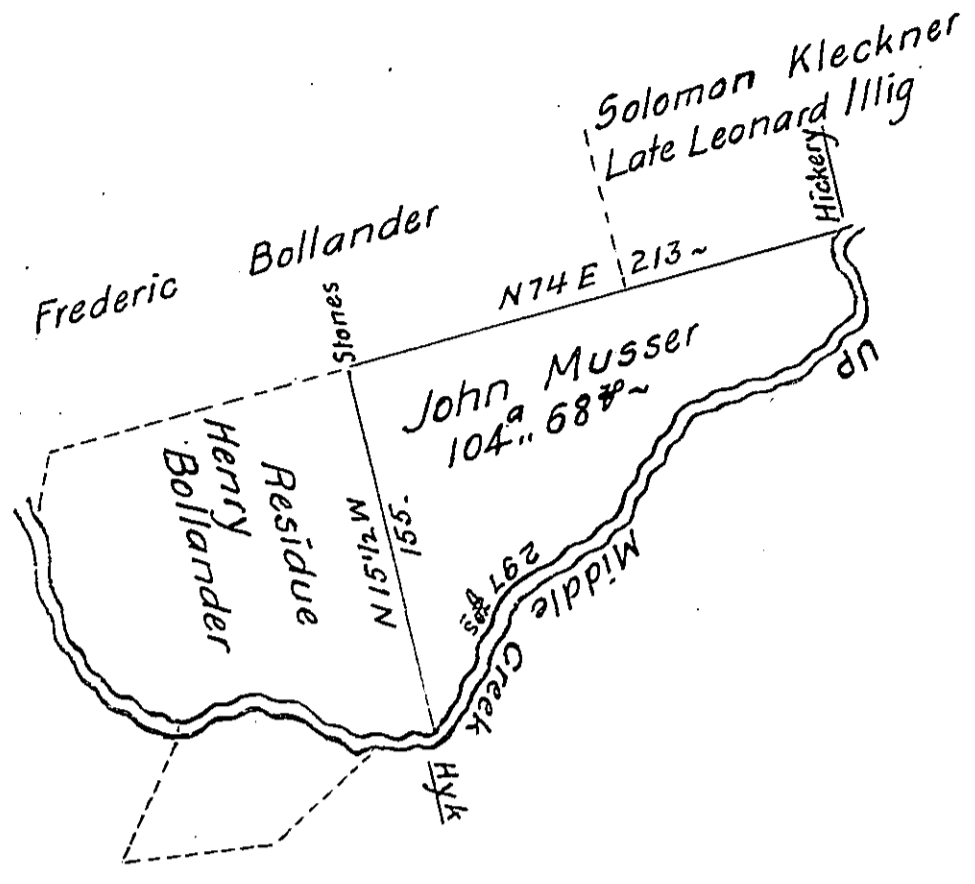


FORM NO. 1.

Courses & Distances up Middle Ck from Hickery

- S 11 W 16
- S 55 E 18
- S 15 W 8
- S 36 W 10
- S 45 W 19
- S 70 W 30
- S 75 W 12
- S 41 W 34
- S 34 W 30
- S 46 W 16
- S 61 W 20
- S 55 W 14
- S 43 W 18
- S 19 W 18
- S 13 W 12
- S 36 W 22

297 #



Situate in Centre township Union County Surveyed the 25th day of December Anno Dom 1828 for John Musser Containing one hundred & four Acres & Sixty eight perches with the Usual allowance of Six #^r Cent & c The Same being part of a tract of land Surveyed the 20th day of June A Dom 1772 for Benedict Mellinger #^r the late William Maclay Esq^r Dec^d then Deputy Surveyor in pursuance of his Warrant bearing date the 10th day of February A.Dom 1755.

To Gabriel Hiester Esq^r }
 Surveyor General Penn^a. }

#^r Jn^o Hayes D.S.

IN TESTIMONY that the above is a copy of the original remaining on file in the Department of Internal Affairs of Pennsylvania, made conformably to an Act of Assembly approved the 16th day of February, 1833, I have hereunto set my Hand and caused the Seal of said Department to be affixed at Harrisburg, this nineteenth day of February 1906

Loac A. Brown
 Secretary of Internal Affairs.